

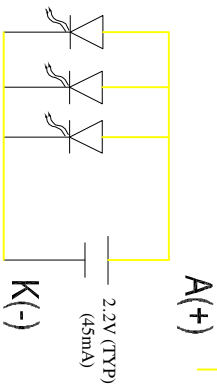
PIN FUNCTION

PIN	NAME	PIN	NAME
1	VDD	16	D7
2	C86	17	D6
3	VSS	18	D5
4	V0	19	D4
5	V1	20	D3
6	V2	21	D2
7	V3	22	D1
8	V4	23	D0
9	C2N	24	/RD(E)
10	C2P	25	/WR(R/W)
11	C1P	26	A0
12	C1N	27	RS1
13	C3P	28	/CS1
14	VOUT	29	NC
15	VSS	30	NC

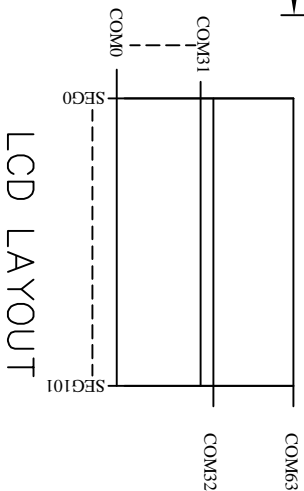
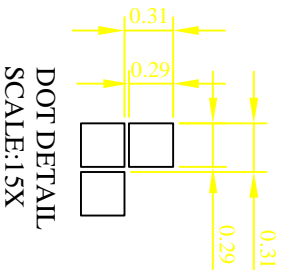
↙ 6:00 O'CLOCK VIEWING DIRECTION

NOTES:

1. DISPLAY TYPE: FSTN, TRANSPARENT/POSITIVE
2. VIEW DIRECTION: 6:00 O'CLOCK
3. DRIVER METHOD: 1/64 DUTY, 1/9 BIAS
4. LCD DRIVING VOLTAGE: 9.6V
5. LOGIC SUPPLY VOLTAGE: 2.4~3.3V
6. OPERATING TEMP: -20° C~+70° C
7. STORAGE TEMP: -40° C~+80° C
8. CONTROLLER/DRIVE IC: ST7565R
9. CONNECTOR TYPE: COG+FPC
10. BACKLIGHT: LED/YELLOW GREEN 2.2V/45mA
11. TOLERANCE UNLESS OTHER SPECIFIED: ±0.2mm



CIRCUIT FOR LED BACKLIGHT



LCD LAYOUT

XIAMEN OCULAR OPTICS CO.,LTD			
REVISION RECORD			
VER	Date	Modify Contents	Name Confirm
2			
3			
4			
5			
6			

Drawn: SKY		Model Name: GD/C10264A-FSY-FBW	
Checker:		Date: 2009-05-31	
Approved:			
Page: 1-1			