

SPECIFICATION

128*64 Dot Matrix LCD Module

GDSC2864WM-17

(COG)

XIAMEN OCULAR LCD DEVIDES CO.,LTD.

GDSC-12864WM-17

GENERAL SPECIFICATION

Interace With Parallel MPU

Driving IC:ST7565V

Display Dot Matrix :128*64

Display Mode:Negative/Transmisstive/FSTN Type

Viewing Angle :12:00 Clock

Display Duty:1/65 Driving Bias:1/9 Driving Voltage:11.0V

Mechanical Characteristics(Unit:mm)

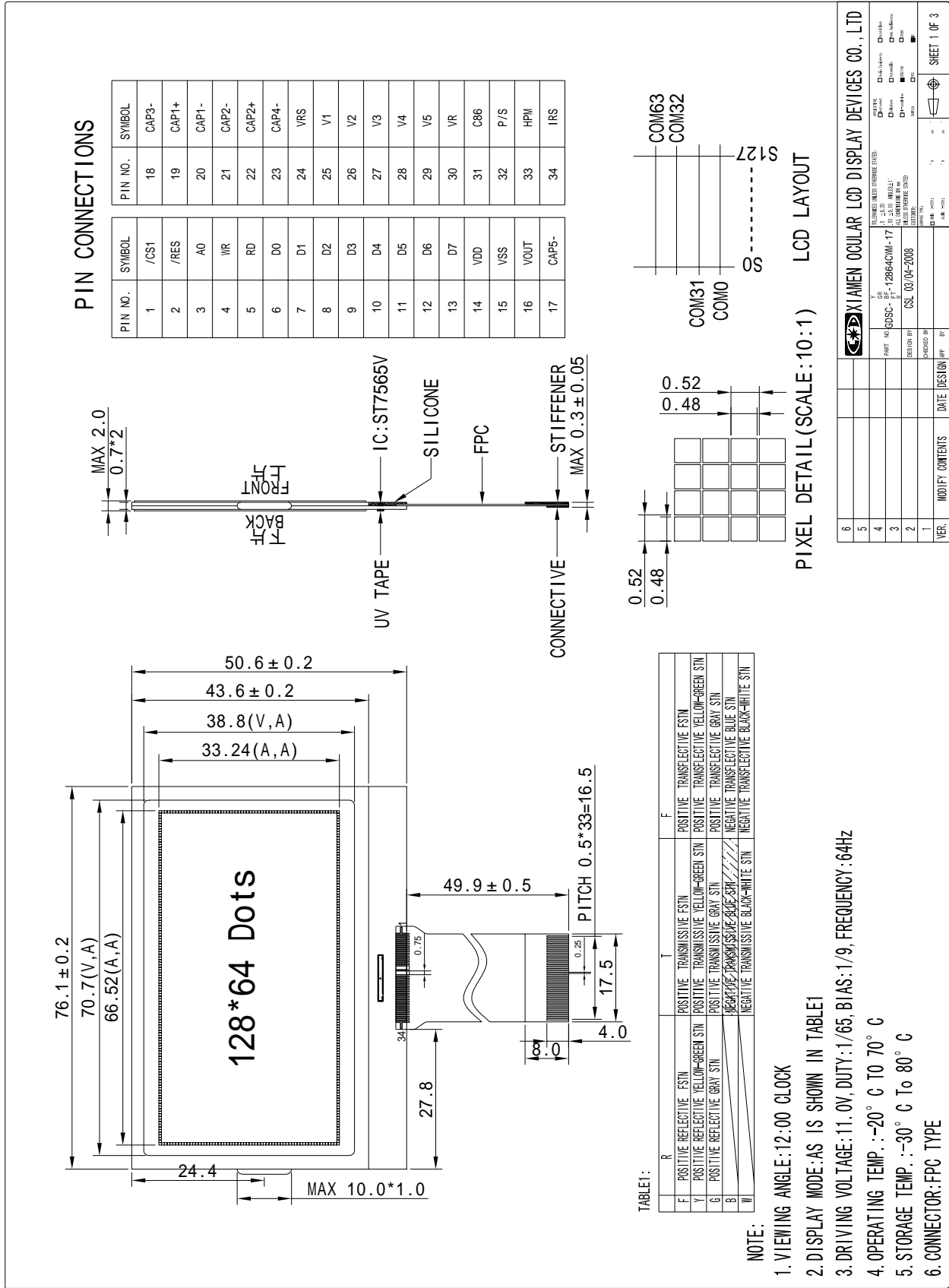
Extenal Dimension:80.0*54.0*6.5

View Area:70.7*38.8

Dots Size:0.48*0.48

Dots Size:0.52*0.52

External Dimension



Absolute Maximun Ratings

Parameter		Symbol	Conditions	Unit
Power Supply Voltage		VDD	0.3 ~ 5.0	V
Power supply voltage (VDD standard)		VDD2	0.3 ~ 4.0	V
Power supply voltage (VDD standard)		V0, Vout	0.3 ~ 18.0	V
Power supply voltage (VDD standard)		V1, V2, V3, V4	V0 to 0.3	V
Operating temperature		TOPR	-40 to +85	°C
Storage temperature	Bare chip	TSTR	-55 to +125	°C

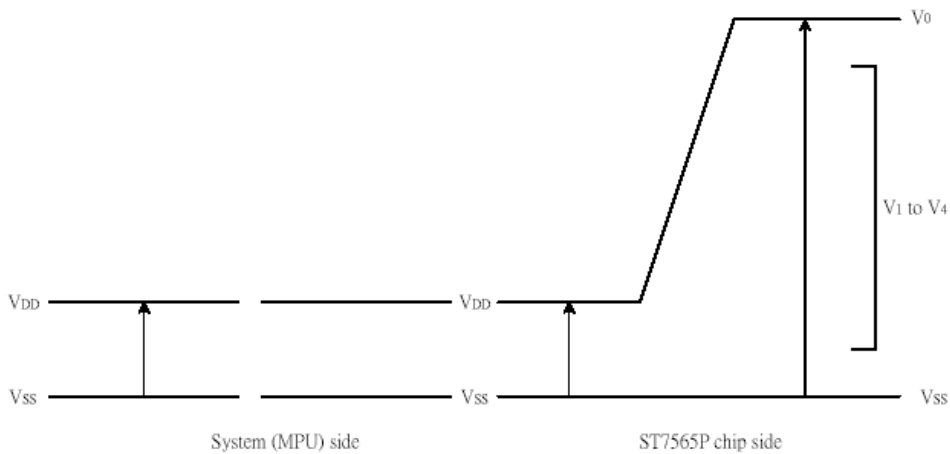


Figure 30

Notes and Cautions

1. The VDD2, V0 to V4 and Vout are relative to the VSS = 0V reference.
2. Insure that the voltage levels of V1, V2, V3, and V4 are always such that $Vout \geq V0 \geq V1 \geq V2 \geq V3 \geq V4$.
3. Permanent damage to the LSI may result if the LSI is used outside of the absolute maximum ratings. Moreover, it is recommended that in normal operation the chip be used at the electrical characteristic conditions, and use of the LSI outside of these conditions may not only result in malfunctions of the LSI, but may have a negative impact on the LSI reliability as well.

PIN Assignment

Pin No	Symbol	I/O	Function
1	CS1	I	This is the chip select signal .When CS1= “ L” and CS2= “ H”,then the chip select becomes active,and data/command I/O is enabled
2	/RESET	I	When /RESET is set to “L”,the setting are initialized The /RESET operation is performed by the RESETB signal level

GDSC-12864WM-17

3	A0	I	Select register. 0:Instruction register (for write) Busy flag & address counter (for read) 1:Data register (for write and read).
4	R/W	I	Read/write select signal.
5	E	I	Operation (data read/write) enable signal.
6	DB0	I/O	This is an 8-bit bi-directional data bus that connects to an 8-bit or 16-bit standard MPU data bus. When the serial interface is selected, then D7 serves as the serial data input terminal and D6 serves as the serial clock input terminal. At this time, D0-D5 are set to high impedance. When the chip select is inactive, D0 to D7 are set to high impedance.
7	DB1		
8	DB2		
9	DB3		
10	DB4		
11	DB5		
12	DB6		
13	DB7		
14	VDD	Supply	Power supply for logic
15	VSS	Supply	Ground.
16	VOUT	O	DC/DC voltage converter output
17	V5-	O	Capacitor5- for internal DC/DC voltage converter
18	C3+	O	Capacitor3+ for internal DC/DC voltage converter
19	C1-	O	Capacitor1- for internal DC/DC voltage converter
20	C1+	O	Capacitor1+ for internal DC/DC voltage converter
21	C2-	O	Capacitor2- for internal DC/DC voltage converter
22	C2+	O	Capacitor2+ for internal DC/DC voltage converter
23	C4-	O	Capacitor4- for internal DC/DC voltage converter
24	VRS	Supply	This is the internal-output VREG power supply for the LCD power supply
25	V1		LCD driver supply voltages. The voltage determined by LCD cell is impedance-converted by a resistive driver or an operation amplifier for application. Voltages should be the following relationship:
26	V2		

GDSC-12864WM-17

27	V3	Supply	V0>V1>V2>V3>V4>VSS When the on-chip operating power circuit is on,the following are given to V1 to V4 by the on-chip power circuit .Voltage selection is performed by the set LCD bias command.										
28	V4		<table border="1"> <tr> <td></td> <td>1/65DUTY</td> </tr> <tr> <td>V1</td> <td>1/9V0,1/7V0</td> </tr> <tr> <td>V2</td> <td>2/9V0,2/7V0</td> </tr> <tr> <td>V3</td> <td>6/9V0,4/7V0</td> </tr> <tr> <td>V4</td> <td>7/9V0,5/7V0</td> </tr> </table>		1/65DUTY	V1	1/9V0,1/7V0	V2	2/9V0,2/7V0	V3	6/9V0,4/7V0	V4	7/9V0,5/7V0
	1/65DUTY												
V1	1/9V0,1/7V0												
V2	2/9V0,2/7V0												
V3	6/9V0,4/7V0												
V4	7/9V0,5/7V0												
29	V0												
30	VR	I	Voltage adjustment pad.Applies voltage between V0 and VSS using a resistive divider										
31	C86	I	C86= " H" :6800 series MPU interface C86= " L" :8080 series MPU interface										
32	PS	I	P/S= " H " :Parallel data input P/S= " L " :serial data input										
33	HPM	I	HPM= " H " Normal mode; HPM= " L " Hiht power mode										
34	IRS	I	IRS= " H " Use the internal resistors IRS= " L " Donot use the internal resistors										

Electrical Characteristics

Item	Symbol	Condition	Standard Value			Unit
			Min	Type	Max	
Supply Voltage For logic	Vdd-Vss	-	1.8	3.0	3.3	V
Supply Current For logic	Idd	-	-	-	1000	uA
Driving Current For LCD	Iee		-	-	80	uA
Driving Voltage For LCD	V0-Vss		-	-	-	V
Input Voltage H level	Vih		0.7Vdd	-	Vdd	V
Input Voltage L level	Vil		Vss	-	0.3Vdd	V

TIMING CHARACTERISTICS

System Bus Read/Write Characteristics 1 (For the 8080 Series MPU)

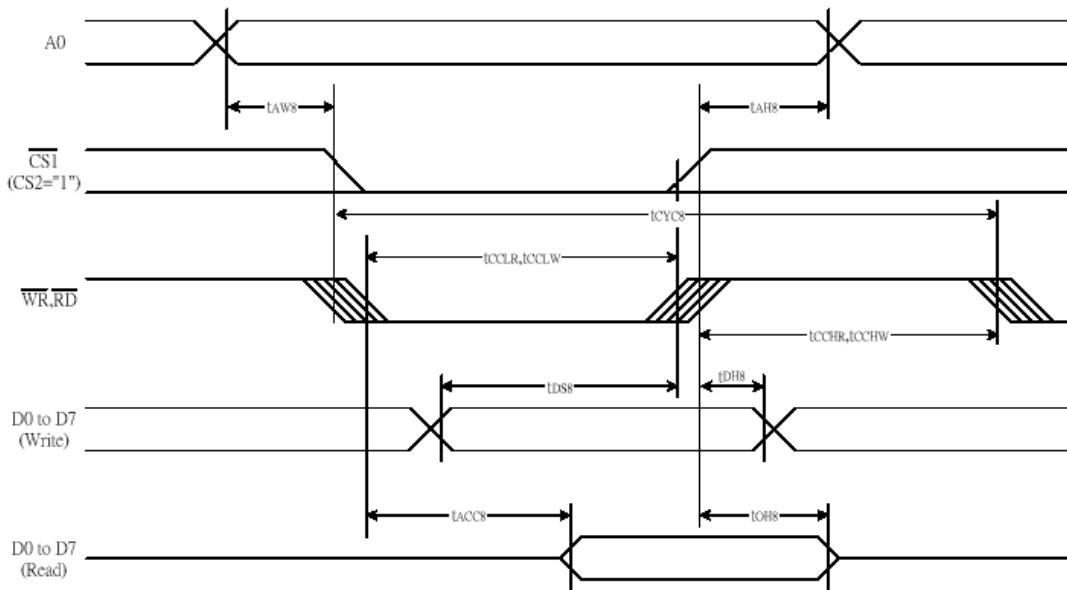


Figure 37

(VDD = 3.3V , Ta =25°C)

Item	Signal	Symbol	Condition	Rating		Units
				Min.	Max.	
Address hold time	A0	tAH8		0	—	Ns
Address setup time		tAW8		0	—	
System cycle time		tCYC8		240	—	
Enable L pulse width (WRITE)	WR	tCCLW		80	—	
Enable H pulse width (WRITE)		tCCHW		80	—	
Enable L pulse width (READ)	RD	tCCLR		140	—	
Enable H pulse width (READ)		tCCHR		80	—	
WRITE Data setup time	D0 to D7	tDS8		40	—	
WRITE Address hold time		tDH8		0	—	
READ access time		tACC8	CL = 100 pF	—	70	
READ Output disable time		tOH8	CL = 100 pF	5	50	

*1 The input signal rise time and fall time (tr, tf) is specified at 15 ns or less. When the system cycle time is extremely fast, (tr + tr) ≤ (tcyc8 – tcclw – tcchW) for (tr + tr) ≤ (tcyc8 – tcclR – tcchR) are specified.

*2 All timing is specified using 20% and 80% of VDD as the reference.

*3 tcclW and tcclR are specified as the overlap between /CS1 being "L" (CS2 = "H") and /WR and /RD being at the "L" level.

IC Specification

See The Reference of Sitronix Data Book---ST7565V

Instruction Table

Table 16: Table of ST7565P Commands

(Note) *: disabled data

Command	Command Code										Function	
	A0	/RD	/WR	D7	D6	D5	D4	D3	D2	D1		D0
(1) Display ON/OFF	0	1	0	1	0	1	0	1	1	1	0	LCD display ON/OFF 0: OFF, 1: ON
(2) Display start line set	0	1	0	0	1	Display start address					1	Sets the display RAM display start line address
(3) Page address set	0	1	0	1	0	1	1	Page address				Sets the display RAM page address
(4) Column address set upper bit	0	1	0	0	0	0	1	Most significant column address				Sets the most significant 4 bits of the display RAM column address. Sets the least significant 4 bits of the display RAM column address.
Column address set lower bit	0	1	0	0	0	0	0	Least significant column address				
(5) Status read	0	0	1	Status				0	0	0	0	Reads the status data
(6) Display data write	1	1	0	Write data							Writes to the display RAM	
(7) Display data read	1	0	1	Read data							Reads from the display RAM	
(8) ADC select	0	1	0	1	0	1	0	0	0	0	0	Sets the display RAM address SEG output correspondence 0: normal, 1: reverse
(9) Display normal/reverse	0	1	0	1	0	1	0	0	1	1	0	Sets the LCD display normal/reverse 0: normal, 1: reverse
(10) Display all points ON/OFF	0	1	0	1	0	1	0	0	1	0	0	Display all points 0: normal display 1: all points ON
(11) LCD bias set	0	1	0	1	0	1	0	0	0	1	0	Sets the LCD drive voltage bias ratio 0: 1/9 bias, 1: 1/7 bias (ST7565P)
(12) Read/modify/write	0	1	0	1	1	1	0	0	0	0	0	Column address increment At write: +1 At read: 0
(13) End	0	1	0	1	1	1	0	1	1	1	0	Clear read/modify/write
(14) Reset	0	1	0	1	1	1	0	0	0	1	0	Internal reset
(15) Common output mode select	0	1	0	1	1	0	0	0	*	*	*	Select COM output scan direction 0: normal direction 1: reverse direction
(16) Power control set	0	1	0	0	0	1	0	1	Operating mode			Select internal power supply operating mode
(17) V ₀ voltage regulator internal resistor ratio set	0	1	0	0	0	1	0	0	Resistor ratio			Select internal resistor ratio(R _b /R _a) mode
(18) Electronic volume mode set Electronic volume register set	0	1	0	1	0	0	0	0	0	0	1	Set the V ₀ output voltage electronic volume register
(19) Static indicator ON/OFF Static indicator register set	0	1	0	1	0	1	0	1	1	0	0	0: OFF, 1: ON Set the flashing mode
(20) Booster ratio set	0	1	0	1	1	1	1	1	0	0	0	select booster ratio 00: 2x,3x,4x 01: 5x 11: 6x
(21) Power saver												Display OFF and display all points ON compound command
(22) NOP	0	1	0	1	1	1	0	0	0	1	1	Command for non-operation
(23) Test	0	1	0	1	1	1	1	*	*	*	*	Command for IC test. Do not use this command

Instruction Description

1. Display On/Off

A0	E	RW	D7	D6	D5	D4	D3	D2	D1	D0
0	1	0	1	0	1	0	1	1	1	-

D0=1 Display On

D0=0 Display Off

2. Set Display Start Line

A0	E	RW	D7	D6	D5	D4	D3	D2	D1	D0
0	1	0	0	1	ST5	ST4	ST3	ST2	ST1	ST0

ST5	ST4	ST3	ST2	ST1	ST0	Line Address
0	0	0	0	0	0	0
0	0	0	0	0	1	1
.
1	1	1	1	1	0	62
1	1	1	1	1	1	63

3. Set Page Address

A0	E	RW	D7	D6	D5	D4	D3	D2	D1	D0
0	1	0	1	0	1	1	P3	P2	P1	P0

P3	P2	P1	P0	Page
0	0	0	0	0
0	0	0	1	1
.
0	1	1	1	7
1	0	0	0	8

4. Set Column Address

A0	E	RW	D7	D6	D5	D4	D3	D2	D1	D0
0	1	0	0	0	0	0	Y7	Y6	Y5	Y4
0	1	0	0	0	0	0	Y3	Y2	Y1	Y0

Y4-Y7 :Higter Bits

Y0-Y3 :Lower Bits

Y7	Y6	Y5	Y4	Y3	Y2	Y1	Y0	Column Address
0	0	0	0	0	0	0	0	0
0	0	0	0	0	0	0	1	1
.
1	0	0	0	0	0	1	0	130
1	0	0	0	0	0	1	1	131

GDSC-12864WM-17

5 . Read Status

A0	E	RW	D7	D6	D5	D4	D3	D2	D1	D0
0	0	1	Status				0	0	0	0

6. Write Display Data

A0	E	RW	D7	D6	D5	D4	D3	D2	D1	D0
1	1	0	Write Data							

7. Read Display Data

A0	E	RW	D7	D6	D5	D4	D3	D2	D1	D0
1	0	1	Read Data							

8. ADC Select

A0	E	RW	D7	D6	D5	D4	D3	D2	D1	D0
0	1	0	1	0	1	0	0	0	0	-

D0=1 Display Reverse

D0=0 Display Normal

9. Normal/Reverse Display

A0	E	RW	D7	D6	D5	D4	D3	D2	D1	D0
0	1	0	1	0	1	0	0	1	1	D

When **D**=1 Reverse Display

D=0 Normal Display

10. Entire Display On/Off

A0	E	RW	D7	D6	D5	D4	D3	D2	D1	D0
0	1	0	1	0	1	0	0	1	0	D

When D=0 Normal Display D=1 Reverse Display

11. Set LCD Bias

A0	E	RW	D7	D6	D5	D4	D3	D2	D1	D0
0	1	0	1	0	1	0	0	0	1	D

When **D**=0 Bias=1/8

D=1 Bias=1/6

12. Read-Modify-Write

A0	E	RW	D7	D6	D5	D4	D3	D2	D1	D0
0	1	0	1	1	1	0	0	0	0	0

13. End

A0	E	RW	D7	D6	D5	D4	D3	D2	D1	D0
0	1	0	1	1	1	0	1	1	1	0

GDSC-12864WM-17

14. Reset

A0	E	RW	D7	D6	D5	D4	D3	D2	D1	D0
0	1	0	1	1	1	0	0	0	1	0

15. Command Output Mode Select

A0	E	RW	D7	D6	D5	D4	D3	D2	D1	D0
0	1	0	1	1	0	0	D	*	*	*

16. Set Power Control

A0	E	RW	D7	D6	D5	D4	D3	D2	D1	D0
0	1	0	0	0	1	0	1	A2	A1	A0

When **A0**=1 Follower Circuit Is Turn on

A1=1 Regulator Circuit Is Turn on

A2=1 Booster Circuit Is Turn on

17. V0 Voltage Regulator Internal Resistor Ratio Set

A0	E	RW	D7	D6	D5	D4	D3	D2	D1	D0
0	1	0	0	0	1	0	0	R2	R1	R0

18. The Electronic Volume Mode Set

A0	E	RW	D7	D6	D5	D4	D3	D2	D1	D0
0	1	0	1	0	0	0	0	0	0	1

19. Electronic Volume Register Set

A0	E	RW	D7	D6	D5	D4	D3	D2	D1	D0
0	1	0	0	0	SV5	SV4	SV3	SV2	SV1	SV0

20. Static Indicator On/Off

A0	E	RW	D7	D6	D5	D4	D3	D2	D1	D0
0	1	0	1	0	1	0	1	1	0	D

When **D**=0: Static Indicator Off

D=1: Static Indicator On

21. Nop

A0	E	RW	D7	D6	D5	D4	D3	D2	D1	D0
0	1	0	1	1	1	0	0	0	1	1

22. Booster Ratio Select Mode Set

A0	E	RW	D7	D6	D5	D4	D3	D2	D1	D0
0	1	0	1	1	1	1	1	0	0	0

23. Booster Ratio Register Set

A0	E	RW	D7	D6	D5	D4	D3	D2	D1	D0
----	---	----	----	----	----	----	----	----	----	----

GDSC-12864WM-17

0	1	0	0	0	0	0	0	0	0	0
0	1	0	0	0	0	0	0	0	0	1
0	1	0	0	0	0	0	0	0	1	1

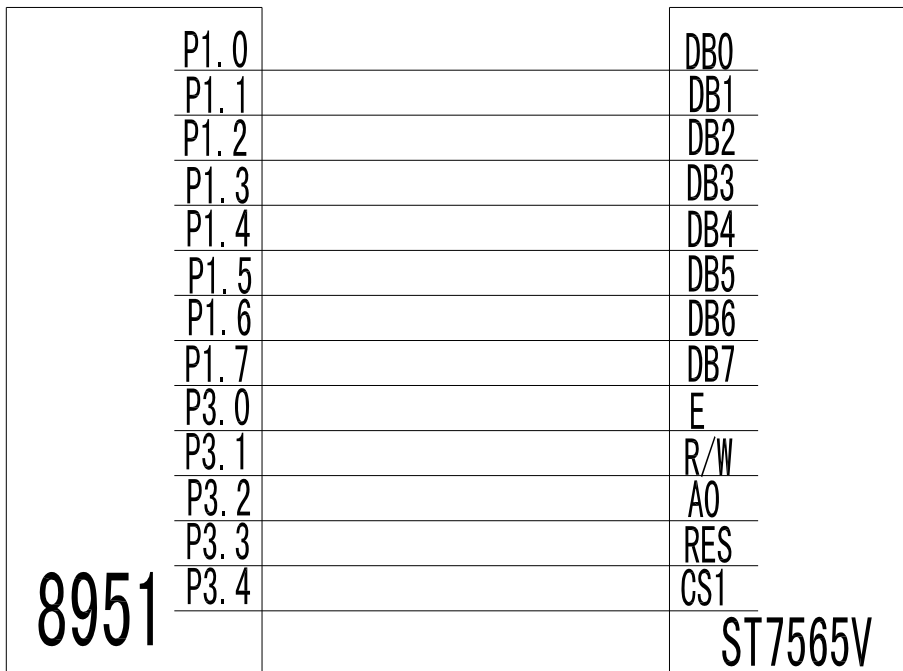
D1、D0=00,2x,3x,4x

D1、D0=01,5x

D1、D0=11,6x

Application Example

Application Circuit



COMPANY PROFILE

XIAMEN OCULAR LCD DEVIDES CO.,LTD. Was formed in 1992. Our company is a joint-venture specializing in manufacturing all kinds of Liquid Crystal Displays. We design and massproduce Touch Panel,LED,COG, the digital segment, dot matrix LCD panels, and modules in TN,HTN and STN types using the advanced and whole facilities and soft-ware technology.

Most of our products are customer_mode. Xiamen Ocular's LCDs now have a good sale not only in domextic China,but also in America,Europe and East_south Aisa.These LCDs were widely used in the display of instruments,clocks,telecommunication equipments,calcuators,air conditioner controllers and AV systems.

Based upon the reliable high quality, reasonable price and quick delivery, Xiamen Ocular will sever all customers wholeheartedly.

Add:South 5/F,Guang Xia Buliding,Tourch Hi-Tech Development Area,Xiamen,China

Tel:+86-592-6026045 5652539 5715579 (Sales) +86-592-6026023(R&D)

Fax:+86-592-6026021

PC:361006

Web:http://www.lcdchina.com

E-mail: xmocular@public.xm.fj.cn sales@lcdchina.com designlcd@163.com (R&D)

ISO9001 质量认证体系

证书号: 3502/20003897

Certificate NO.: 3502/20003897

